



# 5-Axis

Machining Centres

**MAX 5**

**From print to  
part to profit**



# SRTi, SWi and DCX5Si

- > VMX42SWi > VMX60HSRTi
- > VMX42SRTi > VMX84SWi
- > VMX42HSRTi > DCX32 5Si
- > VMX60SWi > DCX42 5Si
- > VMX60SRTi

## Benefits of the SRTi Series

A swivel head, or “B” axis has substantial advantages over a traditional trunnion 5 axis machine in that less manipulation of the component is required.

Greater versatility – Available for use as a full-capacity 3 axis machine, when 5 axis parts aren’t being made.

Heavier, or larger part capacity – Only vertical load bearing is required. Also, parts larger than the table can be machined. This size limit is only restricted by the internal enclosure.

## Benefits of the SWi Series

For these models, the C axis is replaced with a conventional machine table to allow an A axis rotary table to be added, or heavier 4 axis work to be tackled.

## Benefits of the DCX-5Si Series

The DCX range is perfect for very large components. The addition of the 2 axis spindle head allows access to 5 sides of the part without the need for manipulation.



	VMX42SWi	VMX42SRTi	VMX42HSRTi	VMX60SWi	VMX60SRTi	VMX60HSRTi	VMX84SWi	DCX32-5Si	DCX42-5Si	
<b>Table</b>										
Working surface (mm)	1,270 x 610	1,270 x 610	1,270 x 610	1,676 x 660	1,676 x 660	1,676 x 660	2,184 x 865	3,000 x 1,700	4,000 x 2,100	
Working surface rotary table (mm)		Ø 600	Ø 600		Ø 600	Ø 600				
T-Slots (mm)	5 x 18 x 100	5 x 18 x 100	5 x 18 x 100	6 x 18 x 100	6 x 18 x 100	6 x 18 x 100	7 x 18 x 125	7 x 22 x 220	9 x 22 x 220	
Max. Table load (Kg)	1,750	1,360	1,360	2,000	1,360	1,360	2,268	11,000	16,000	
Max. Table load rotary table (Kg)		500	500		500	500				
<b>Travels</b>										
X-Axis (mm)	1,067	1,067	1,067	1,524	1,524	1,524	2,134	3,200	4,200	
Y-Axis (mm)	610	610	610	660	660	660	865	2,100	2,600	
Z-Axis (mm)	610	610	610	610	610	610	762	900	1,100	
B-Axis (°)	± 92	± 92	± 92	± 92	± 92	± 92	± 92	+100/-110	+100/-110	
C-Axis (°)		Continuous	Continuous		Continuous	Continuous		± 360	± 360	
<b>Spindle Motor</b>										
Spindle Power Max (KW)	36.5	36.5	35	36.5	36.5	35	36.5	63	63	
Torque Peak (Nm) @ (rpm)	118@2,900	118@2,900	119@2,800	118@2,900	118@2,900	119@2,800	118@2,900	106@5,700	106@5,700	
<b>Spindle</b>										
Taper	CAT/BT 40	CAT/BT 40	HSK-63A	CAT/BT 40	CAT/BT 40	HSK-63A	CAT/BT 40	HSK-63A	HSK-63A	
Spindle Nose to Table (mm) Max	762	613	613	711	622	622	890	966	1166	
Spindle Speed Max (rpm)	12,000	12,000	18,000	12,000	12,000	18,000	12,000	18,000	18,000	
<b>Toolchanger</b>										
Stations	40	40	40	40	40	40	40	40(60*)	40(60*)	
Max. Tool Diameter (mm)	76/(110*)	76/(110*)	76/(110*)	76/(110*)	76/(110*)	76/(110*)	76/(110*)	76/(120*)	76/(120*)	
Max. Tool Length (mm)	250	250	250	250	250	250	250	300	300	
Max. Tool Weight (Kg)	7.0	7.0	7.0	7.0	7.0	7.0	7.0	7.0	7.0	
<b>Further details</b>										
Rapid travel (m/min ) X/Y/Z Axis	38/38/32	38/38/32	45/45/40	32/32/24	32/32/24	45/45/40	18/18/13.5	15/15/10	12/12/10	
Rapid Travel (RPM) B/C Axis	50/-	50/100	50/100	50/-	50/100	50/100	50/-	120/80	120/80	
Machine Weight (Kg)	7,130	8,400	8,400	9,000	9,800	9,091	16,730	37,640	51,770	

\*option

Further information and technical data on the product, see [www.hurco.co.uk](http://www.hurco.co.uk).  
Machines shown with options. Prices and information may change without notice.

# VMXi, Vci and VCXi

- > VM10Ui
- > VMX30Ui
- > VMX42Ui
- > VC500i
- > VM10UHSi
- > VMX30UHSi
- > VMX42UHSi
- > VCX600i

## Benefits of a 5 axis trunnion machine

Easy transition from 3 axis machining. Using Hurco's unique "transform plane" conversational programming, 5 sided work can be programmed without the huge investment and learning required with a CAD/CAM system. A range of purpose built, structurally rigid machines cover a variety of capacity and table sizes.

High speed spindles are available on several of the models, as are a range of automation systems to help gain the maximum productivity from your investment



	VM10Li	VM10UHSi	VMX30Li	VMX30UHSi	VMX42Li	VMX42UHSi	VC500i	VCX600i
<b>Table</b>								
Working Surface (mm)	Ø 198	Ø 198	Ø 248	Ø 248	Ø 348	Ø 348	Ø 500	600 x 600
T-Slots (mm)	6 x 10 @ 60°	6 x 10 @ 60°	6 x 12 @ 60°	6 x 12 @ 60°	6 x 14 @ 60°	6 x 14 @ 60°	5 x 14 x 100	5 x 14 x 100
Max. Table Load (Kg)	150	150	200	200	250	250	250	350
<b>Travels</b>								
X-Axis (mm)	533	533	762	762	1,067	1,067	520	820
Y-Axis (mm)	406	406	508	508	610	610	450	550
Z-Axis (mm)	483	483	520	520	520	520	400	500
A-Axis (°)	+30/-110	+30/-110	+30/-110	+30/-110	+30/-110	+30/-110	-	-
B-Axis (°)							-110/+110	-110/+110
C-Axis (°)	Continuous	Continuous	Continuous	Continuous	Continuous	Continuous	Continuous	Continuous
<b>Spindle Motor</b>								
Spindle Power (KW) Peak	11	8.5	13.4	35.0	18	35.0	13	16
Torque Peak (Nm) @ (rpm)	73.6@1,450	5.9@14,700	214@600	119@2,800	239@720	119@2,800	82@1,500	108.7@1,500
<b>Spindle</b>								
Spindle	BIG PLUS	i-BAG	BIG PLUS	Kessler	BIG PLUS	Kessler	BIG PLUS	BIG PLUS
Taper	CAT/BT 40	BT30	CAT/BT 40	HSK63A	CAT/BT 40	HSK63A	CAT/BT 40	CAT/BT 40
Spindle Nose to Table (mm) Max	519	519	610	610	610	576	550	650
Spindle Speed Max (RPM)	10,000 (12,000*)	20,000/(30,000)*	12,000	18,000	12,000	18,000	12,000	12,000
<b>Toolchanger</b>								
Stations	20	20	40	40	40	40	30/(40*)	40
Max. Tool Diameter (mm)	89/(127*)	60/(100*)	76/(130*)	76/(130*)	76/(130*)	76/(130*)	76/(130*)	76/(130*)
Max. Tool Length (mm)	250	250	300	300	300	300	250	300
Max. Tool Weight (Kg)	7	3	7	7	7	7	7	7
<b>Further Details</b>								
Rapid Traverse (m/min) X/Y/Z Axis	28/28/28	28/28/28	38/38/32	45/45/40	38/38/32	45/45/40	28/28/28	36/36/36
Rapid Traverse (rpm) A/C Axis	25/25	25/25	25/25	25/25	25/25	25/25	25/25	50/100
Machine Weight (Kg)	3,360	3,102	5,280	5,280	7,200	7,200	8,400	10,000

\*option

Further information and technical data on the product, see [www.hurco.co.uk](http://www.hurco.co.uk).  
Machines shown with options. Prices and information may change without notice.

# Max 5

From print to part to profit

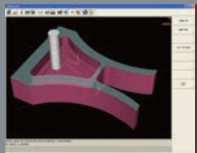
- > faster from drawing to finished part
- > shortest learning curve
- > fastest programming
- > intuitive operation
- > ergonomically designed



Sketch



Drawing



CAD/CAM



Desktop



DXF File



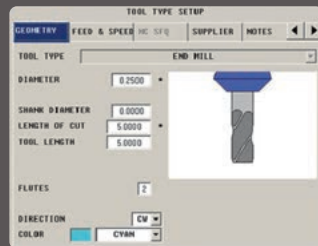
All Hurco machining centres incorporate a multi-core CPU to allow concurrent programming capabilities and high resolution 3D graphic display. A minimum of 2.7GHz Pentium 4 processor with 4GB RAM and 128 GB Hard Drive supports the Windows operating system. All-digital internal communications and drives are able to respond precisely to the Ultimotion software, achieving 600 block look ahead and 2,277 block processing speed. Simple, easy to use interface accepts Hurco's popular Conversational, or Industry Standard NC programming as standard.

# WinMax®

## Faster from the drawing to the finished part

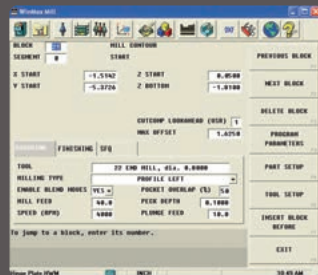
HURCO continues its reputation for technology innovation that yields measurable productivity gains for its customers because we're focused on your success. When we designed WinMax® control software, we focused on simplicity for the user. Less keystrokes, intuitive software, advanced graphics capabilities, and an enhanced graphical interface.

Conversational programming with WinMax® gets you from print to part faster than ever. Three steps and you're there.



### Step 1: Setup

Setup is even easier with the WinMax® Tool & Material Library. Set up each tool one time and you're finished - the parameters are stored with the control so you just recall the tool the next time.



### Step 2: Program

The graphical user interface of WinMax simplifies programming. Conversational programming with WinMax® will save you time and give you peace of mind - especially when you need to hire and train employees because it's easy to learn and easy to use.



### Step 3: Verify

Advanced Verification Graphics with 3D solid rendering of the part, including dynamic rotation and real time tool display, make proving out the part a snap. View the part from any angle without the need to redraw it.

## WinMax Features and Options

- Interrupt cycle – Stop the program whenever you like to check the part or clean the tool. The machine will restart where you left off
- Data Block Search – Touch the feature that you need to edit on the graphics screen. The input screen will jump automatically to that part of the program
- Estimated run-time – Provides an accurate run-time estimate based on the feeds, speeds and tool-change times of that particular machine
- Concurrent programming – Program the next job, whilst simultaneously running your current job
- Math Assist – Draw the part geometry and the control will automatically calculate the intersection points for you.
- Select Surface Finish Quality – Maximise the surface finish and minimise the time spent cutting to suit your needs.
- Tool Change Optimization – Optimise the number of tool changes to minimise cycle times for conversational programs
- Ultimotion - High-speed contouring with look-ahead and data-smoothing standard on all Hurco machines
- ISNC – Industry standard compatibility for CAM programs
- Ultipocket – Unlimited islands within a pocket boundary, includes Helical ramp entry and Adaptipath, optimised CAM-style cutting routines\*
- Conversational / NC Merge – Incorporate NC code as part of a conversational program\*
- DXF – Take features, contours, hole positions direct from a DXF file. Save time, make less mistakes\*
- Solid Model Import – Import STEP models direct into the control. Works great for 5-sided parts. Uses Hurco's transform plane software to rotate the part automatically\*
- Adjacent Pocket Empty – Feature to accept toolchanging of larger tools\*

\*Option (The above list is not exhaustive, book a demo to see the all available WinMax features)

**United Kingdom and Ireland**

12 Merlin Centre  
Lancaster Road  
Cressex Business Park  
High Wycombe HP12 3TB  
Tel: (01494) 442222  
sales@hurco.co.uk  
www.hurco.co.uk

**South Africa**

TH Machine Tools  
102 Chopin St Melodie A/H  
Hartbeespoort  
South Africa 0216  
Tel: +27 12 259 1375  
sales@thmachinetools.co.za  
www.thmachinetools.co.za

**Sweden**

AB Nordiska Wemag  
Gottskarsvagen 150  
SE-43994 Onsala  
Sweden  
Tel: +46 300 302 90  
info@nordiskawemag.se  
www.nordiskawemag.se

**Israel**

NR Automation  
Shenhav 9  
Neve Monoson  
60190 Israel  
Tel: 03-6342115  
www.n-r.co.il  
info@n-r.co.il

**Estonia and Finland**

Venten OÜ  
Suur-Sõjamäe 50a  
11415 Tallinn  
Tel: +372 668 2321  
info@venten.ee  
www.venten.ee

**Greece**

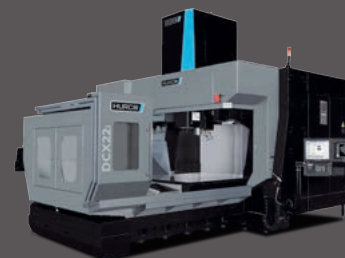
Ropi Machine Tools  
64B Vasilikon Str.  
18 540 PIRAEUS, Greece  
Tel: +30 210 413 1712  
Fax: 0030 210 4131714  
info@ropi-machines.gr  
www.ropi-machines.gr

**Egypt**

Setra Egypt  
Professional Industrial Solutions  
Ordonia Buildings, Building 16,  
Office 1 Post No. 44466, Egypt  
Tel: +20 1001 82 1622  
Email: Yasser@setraegypt.com  
www.setraegypt.com

**Denmark and Norway**

CNC-TECH ApS  
Rydskovvej 41, Rydskov  
5560 Aarup, Denmark  
Tel: +45 6488 1060  
Mobile: +45 3070 7220  
info@cnc-tech.dk  
www.cnc-tech.dk

**MACHINING CENTRES****TURNING CENTRES****5 AXIS****DOUBLE COLUMN****SUPERIOR CONTROLS**